

***honestech***  
**Easy Video Editor 2.0**

**User Guide**



# End User License Agreement

**IMPORTANT** : READ THE FOLLOWING TERMS AND CONDITIONS CAREFULLY BEFORE CONTINUING THIS INSTALLATION.

IF YOU DO **NOT** AGREE WITH THESE TERMS AND CONDITIONS, PROMPTLY REMOVE THE SOFTWARE FROM YOUR COMPUTER AND RETURN THE SOFTWARE, INCLUDING THE DOCUMENTATION, TO YOUR **SUPPLIER** AND YOUR MONEY WILL BE REFUNDED. IF YOU DOWNLOADED THIS SOFTWARE, PLEASE REMOVE THE SOFTWARE FROM YOUR COMPUTER AND CONTACT YOUR SUPPLIER TO REQUEST A REFUND.

In this license agreement (the "License Agreement"), you (either **individual** or an entity), the purchaser of the license rights granted by this License Agreement, are referred to as "licensee" or "You". **Honest Technology** is referred to as the "Licensor". The current version of the accompanying software ("Software") and documentation ("Documentation") are collectively referred to as the "Licensed Product". Licensor may furnish hardware with the Licensed Product ("Hardware")

## 1. License

In accordance with the terms and conditions of this License Agreement, the Software is the property of the Licensor and is protected by Copyright Law. While the Licensor continues to own the Software, the Licensor grants the Licensee, after Licensee's acceptance of this License Agreement, the Limited, non-exclusive license to use on copy of the current version of Licensed Product as described below. The Software is "used" on a computer when it is loaded into the temporary memory (i.e., RAM) or installed into the permanent memory (e.g., hard disk, CD-ROM, or other storage device) of that computer, except that a copy installed on a network server for the sole purpose of distribution to another computer is not considered "in use". Except as may be modified by a license addendum which accompanies this License Agreement, the Licensee's rights and obligations with respect to the use of this Software are as follows:

### You May,

- I. Use the Software for commercial or business purposes in the manner described in the Documentation.
- II. Use the Software to share Internet connection, transfer data, files and images among the computer in the manner described in the Documentation.

### You May Not,

- I. Copy the documentation that accompanies Software.
- II. Sublicense or lease any portion of the Software.
- III. Make illegal duplication of the software.

2. **Copyright and Trade Secrets.** All rights in and to the Licensed Product including, but not limited to, copyrights and trade secrets rights, belong to Licensor, and Licensor holds title to each copy of the Software. The licensed Product is protected by United States Copyright Laws and international treaty Provisions.
3. **Term.** This License Agreement is effective until terminated. Licensee may terminate this License Agreement if Licensee breaches any of the terms and conditions herein. Upon termination of this License Agreement for any reason, Licensee shall return to Licensor or otherwise destroy the Licensed Product and all copies of the Licensed Product. Upon request of Licensor, Licensee agrees to certify in writing that all copies of the Software have been destroyed or returned to Licensor. All provisions of this Agreement relating to disclaimers of warranties, limitation of liability, remedies, or damages, and Licensor's proprietary rights shall survive termination.
4. **Executable Code.** The Software is delivered in executable code only. Licensee shall not reverse engineer, compile or otherwise disassemble the Software.

## **5. Limited Warranty**

- a. Licensor does not warrant that the functions contained in the Licensed Product and Hardware will meet Licensee's requirements or that the operation of the Software and Hardware will be uninterrupted or error-free. Licensor does warrant that the media on which the Software is furnished and the hardware will be free from defects in materials and workmanship under normal use for a period of thirty (30) days from the date of delivery ("Warranty Period"). This Limited Warranty is void of failure of the media on which the Software is furnished has resulted from accident, abuse, or misapplications.
- b. EXCEPT AS PROVIDED ABOVE, THE LICENSED PRODUCT IS PROVIDED "AS IS" WITHOUT WARRANTY OF ANY KIND, EITHER EXPRESS OR IMPLIED INCLUDING, BUT NOT LIMITED TO, IMPLIED WARRANTIES OF MERCHANTABILITY AND FITNESS FOR A PARTICULAR PURPOSE, AND THE ENTIRE RISK AS TO THE QUALITY AND PERFORMANCE OF THE LICNESED PRODUCT AND HARDWARE IS WITH LICENSE.

## **6. Limitation of Liability**

- a. Licensor's sole obligation or liability and licensee's exclusive remedy under this agreement shall be the replacement of the defective media on which the software is furnished and/or the hardware according to the limited warranty above.
- b. In no event will licensor be liable for any consequential, incidental or indirect damages including, without limitation, any loss of data or information, loss of profits, loss savings, business interruption or other pecuniary loss, arising out of use of or liability to use the software or documentation or any hardware, even if licensor has been advised of the possibility of such damages, or for any claim by any third party.

## **7. General**

- a. Any Software and Hardware provided to Licensee by Licensor shall not be exported or re-exported in violation of any export provisions of the United States or any other applicable jurisdiction. Any attempt to sublicense, assign or transfer any of the rights, duties or obligations hereunder is void. This Agreement shall be governed by and interpreted under the laws of the State of New Jersey, United States of America, without regard to its conflicts of law provisions. Licensor and Licensee agree that the U.N. Convention on Contracts for the International Sales of Goods shall not apply to this License Agreement.
- b. This License Agreement may only be modified or amended by a written license addendum that accompanies this License Agreement or by written document that has been signed by both you and Licensor. Site licenses and other types of enterprise licenses are available upon request. Pleas contact Licensor or your supplier for further information.
- c. Any controversy or claim arising out of or relating to this Agreement, or the breach of this Agreement, shall be settled by arbitration administered by the American Arbitration Association in accordance with its Commercial Arbitration Rules and Judgment upon the award rendered by the arbitrator may be entered in any court having jurisdiction thereof. The arbitration shall be held in New Jersey, United States of America.

If you have any other questions concerning this License Agreement, or if you desire to contact Licensor for any reason, please contact Honest Technology.

# Table of Contents

<b>END USER LICENSE AGREEMENT .....</b>	<b>2</b>
<b><i>honestech</i> Easy Video Editor Functions.....</b>	<b>6</b>
<b>1. Welcome to the <i>honestech</i> Easy Video Editor 2.0 Installation Guide.....</b>	<b>7.</b>
<b>2. How to Start and Close <i>honestech</i> Easy Video Editor 2.0.....</b>	<b>12</b>
2.1. Start <i>honestech</i> Easy Video Editor 2.0	
2.2. Close <i>honestech</i> Easy Video Editor 2.0	
<b>3. Product Features.....</b>	<b>13</b>
<b>4. Product Requirements.....</b>	<b>13</b>
4.1. Input/Output Type	
4.2. Processor	
4.3. Operating System	
4.4. Memory	
4.5. Additional System Requirements:	
<b>5. How to Use.....</b>	<b>14</b>
5.1. Step 1 (Input File)	
5.2. Step 2 (Play File)	
5.3. Step 2 (Automatic Split File)	
5.4. Step 3 (Frame Range Selection)	
5.5. Step 4 (Cut or Clear Button)	
5.6. Step 5 (Repeat Steps 3 and 4)	
5.7. Step 6 (Preview)	
5.8. Step 7 (Save)	
5.9. Step 8 (Select Split or Join)	
5.10. Step 9 (Save Information and Output Window)	
5.11. Usage	

<b>6. Screen layout and explanation</b> .....	22
6.1. System Menu	
6.2. File Input Window	
6.3. Playback and Message Window	
6.4. File Output Window	
6.5. Work Frame Window	
6.6. Output Format	
6.7. Popup Menu	
6.8. Delete File	
6.9. File Properties	
<b>7. Uninstall <i>honestech</i> Easy Video Editor 2.0</b> .....	35
<b>8. Copyright</b> .....	36

## ***honestech* Easy Video Editor Functions**

**Split**      Save each frame as a separate file.  
Divide a large file into multiple small files.  
Auto Split a registered file that is in MPEG format.

**Join**      Save several frames as one file.  
Merge multiple small files as one large file.

- Supports multi-input and multi-output.
- Works through an easy-to-use interface.
- Allows the user to work with multiple input files.
- Sets multiple frames for one file.
- Manages the original file and editing frames on separate windows.
- Displays the current position of a video by frames, number and time (seconds).
- Allows the user to preview a file in advance, before its final saving.

# 1. Welcome to the *honestech* Easy Video Editor 2.0 Installation Guide

1.1. The instructions below will guide you through the installation process.

*Notes:*

- *We recommend that you defragment your HDD (Hard Disk Drive) prior to installing the software. To access Windows Defragmenter, follow these steps, beginning with **Start** menu button on the lower-left corner of the taskbar:*

**Start → All Programs → Accessorie → System Tools → Disk Defragmenter**, and follow the instructions on the screen.

- *If there is any security software on your PC that may block or interfere with the installation, please disable it or set it to **off** prior to beginning installation.*

Insert **honestech Easy Video Editor 2.0** installation CD into the CD/DVD drive on your computer. When *honestech* Easy Video Editor 2.0 installation wizard starts, please click **INSTALL** to start the installation process.

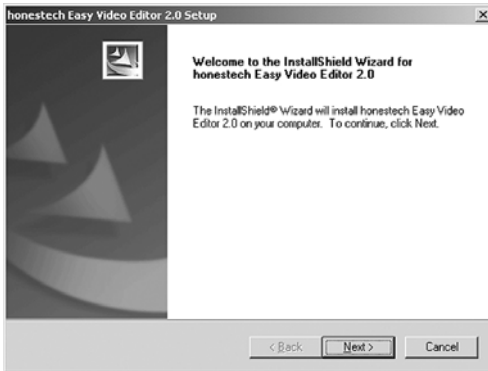
*Notes :*

- *If the installation wizard does not automatically start, click on Windows Start menu button on the lower-left corner of the taskbar and choose **RUN**.*
- *If your **CD-ROM** drive is labeled as volume D, type **d:\autorun** in the **RUN** dialog box. If you are using a drive with a different volume label, type that letter designation in place of the **d**. For example, if you have inserted the installation CD into drive F, then type **f:\autorun**.*
- *Another option (if the installation wizard does not start automatically) is to find the **Setup.exe** file on the installation CD by browsing Windows Explorer or My Computer. Double-click on it to open the file and start the installation process.*

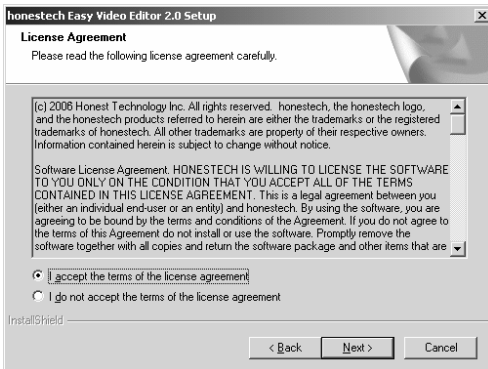
1.2. Click **INSTALL** to start your *honestech* Easy Video Editor 2.0 program installation.

8. honestech

1.3. Click **[Next >]** to continue with the installation.



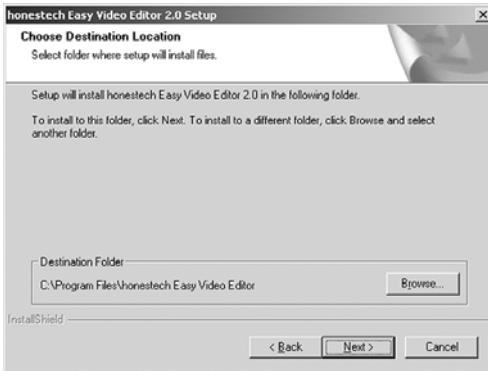
1.4. Read the **License Agreement**. Click **[Next >]** to accept the agreement and continue with the installation.



*Note :*

*The installation will NOT continue if you do NOT accept the agreement.*

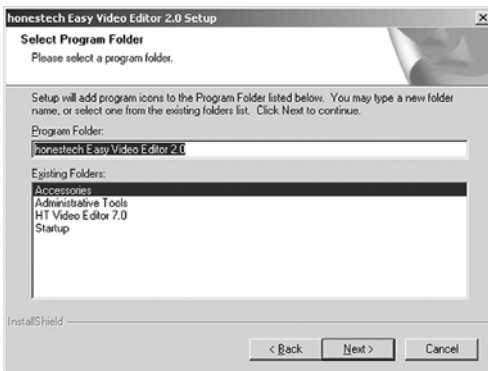
1.5. When “Choose Destination Location” screen is displayed, accept the default setting or change the installation directory by clicking **[Browse...]**. Click **[Next >]** to continue with the installation.



**<Warning>**

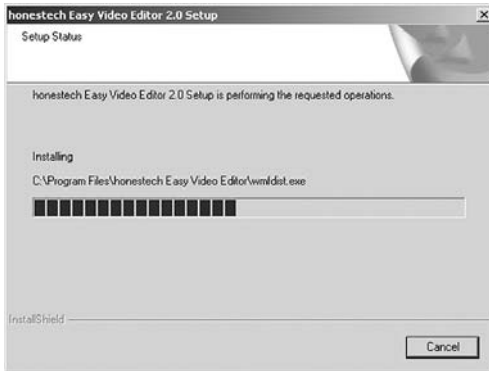
***We strongly recommend that you install the software on an internal drive and NOT on an external storage device. The application may not run properly if installed on an external storage device.***

1.6. Use the default program folder or select or create your own program folder. Click **[Next]** to continue.

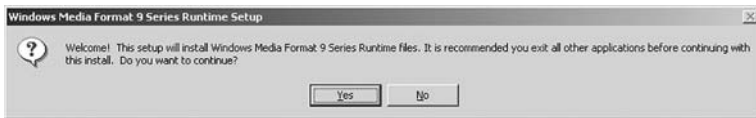


10. honestech

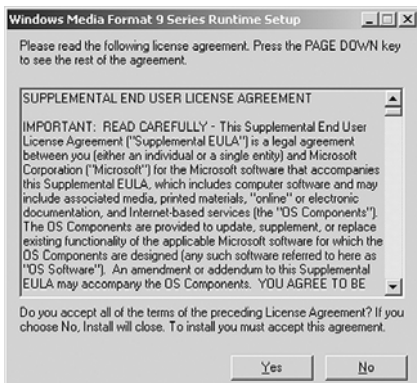
1.7. The Setup Status screen will be displayed to show the installation progress.



1.8. You must install "Windows Media Format 9 Series Runtime" files. Click **[Yes]** to continue with the installation. If you do not wish to continue with the installation, click **[No]**. Note: this will abort the installation process, and you will NOT be able to use *honestech Easy Video Editor 2.0*.



1.9. Read **SUPPLEMENTAL END USER LICENSE AGREEMENT**. Click **[Yes]** to accept the agreement and continue with the installation. If you do NOT accept the agreement, the installation process will NOT continue.



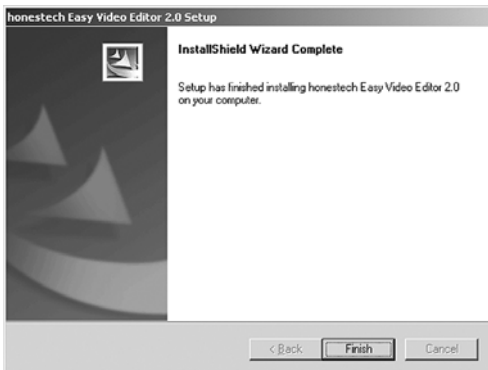
1.10. The Setup Status screen will be displayed to show the installation progress.



The following message will be displayed to confirm the successful completion of Windows Media Format 9 Series Setup. Please click **[OK]** to continue.



1.11. The following message will be displayed at the end of the installation process. Please click **[Finish]** to complete the installation process.

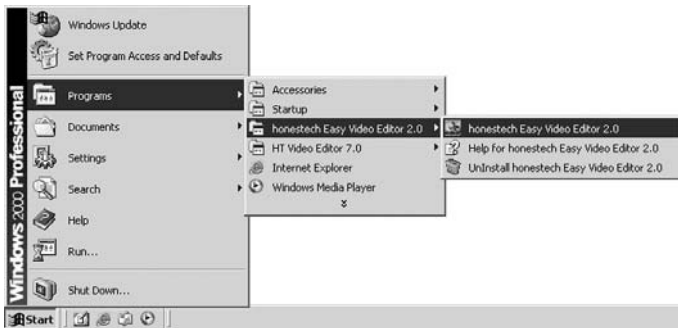


## 2. How to Start and Close *honestech* Easy Video Editor 2.0

### 2.1. Start *honestech* Easy Video Editor 2.0

To start the program from your Windows Desktop, click the *honestech* Easy Video Editor 2.0 icon. You may also choose to start the program, beginning at the Start Menu on the task bar at the bottom of the screen, and click

**Start → Programs → *honestech* Easy Video Editor 2.0 → *honestech* Easy Video Editor 2.0**



*Note :*

*You must enter the product key to use honestech Easy Video Editor 2.0 (first time only). The Product Key is located on the back side of the CD jewel case. After entering the Product Key, click [OK] to continue.*



### 2.2. Close *honestech* Easy Video Editor 2.0

To close the program, click on the upper-right [X] button of the Easy Video Editor 2.0 window.

### 3. Product Features

- Split a large file into multiple smaller files (Split Feature)
- Split a file with ease using Auto-Split: MPEG format only (Split Feature)
- Merge several clips into one clip (Join Feature)
- Supports multi-inputs and multi-outputs
- Easy-to-use interface
- Manage original file and edit frames on separate windows
- Display current position of video by frame number and time (second)
- Preview your video before making permanent changes.

### 4. Product Requirements

#### 4.1. Input/Output Type:

- AVI
- DV-AVI
- MPEG-1, VCD
- MPEG-2, SVCD, DVD
- WMV, ASF (ASF is available to Input only.)

#### 4.2. Processor:

- Intel Pentium (Pentium MMX or Pentium IV recommended)

#### 4.3. Operating System:

- Windows 98SE
- Windows Me
- Windows 2000
- Windows XP

#### 4.4. Memory:

- 64 MB or more

#### 4.5. Additional System Requirements:

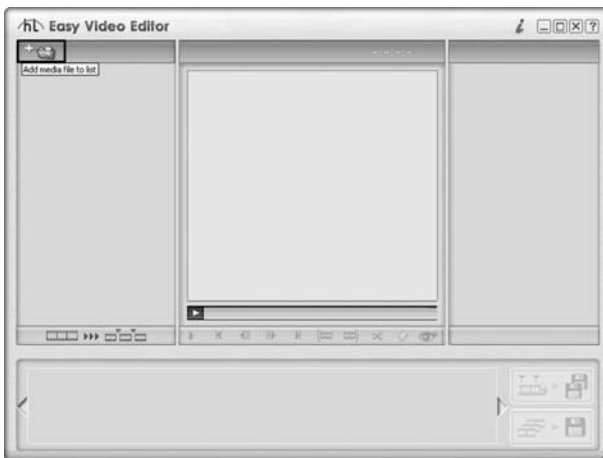
- DirectX 9 or above
- Windows Media Format SDK 8 or above
- Window Media Player 7 or above

## 5. How to Use

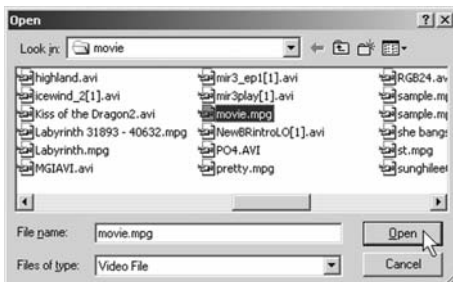
- Step 1 (Input File)
  - Step 2 (Play File)
  - Step 2 (Automatic Split File)
  - Step 3 (Frame Range Selection)
  - Step 4 (Cut or Clear Button)
  - Step 5 (Repeat Steps 3 and 4)
  - Step 6 (Preview)
  - Step 7 (Save)
  - Step 8 (Select Split or Join)
  - Step 9 (Save Information and Output Window)
- Usage

### 5.1. Step 1 (Input File)

5.1.1. Add input files by clicking on the "File Input" button.

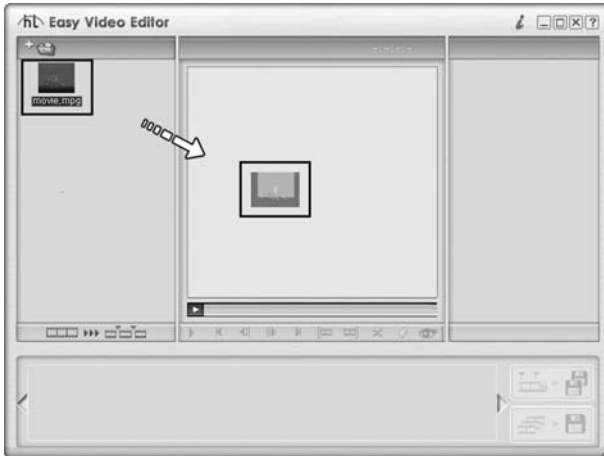


5.1.2. Click "Open" button or use Drag-and-Drop to transfer files between Windows Explorer and the "File Input" window.



## 5.2. Step 2 (Play File)

5.2.1. Play input files by double-clicking on the clip or by moving (drag-and-drop) the clips into the "Playback and Message" window.

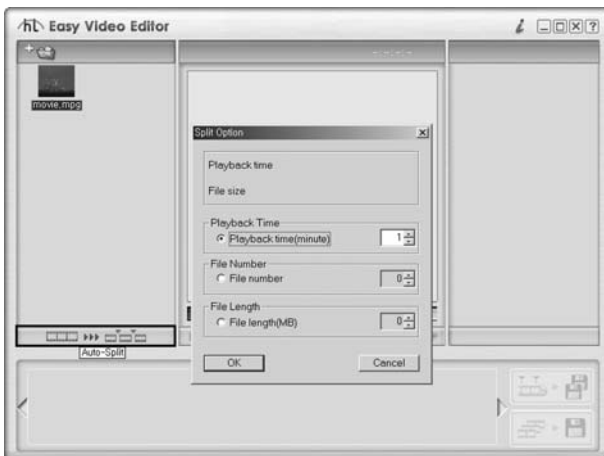


## 5.3. Step 2 (Automatic Split File)

5.3.1. Select the input video file.

5.3.2. To use **Auto-Split** feature, click on the "Auto-Split" button.

5.3.3. The "Split Option" dialog will be displayed.



### 5.4. Step 3 (Frame Range Selection)

5.4.1. Mark the beginning point (frame) of the video by clicking **“Mark-In”** button.

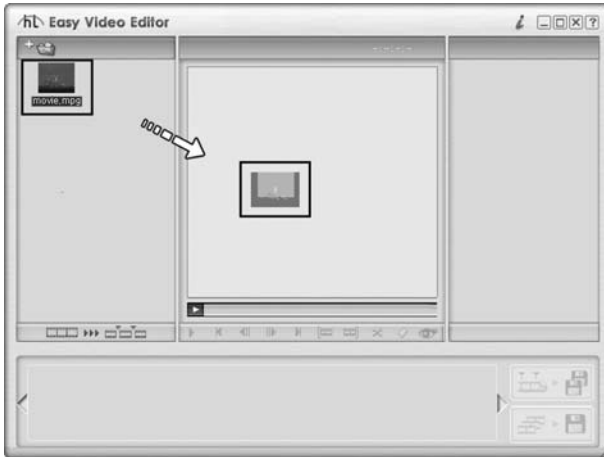


5.4.2. Mark the ending point (frame) of the video by clicking **“Mark-out”** button.



## 5.5. Step 4 (Cut or Clear Button)

5.5.1. Clear selected fields by clicking on the “Clear Mark” button.



5.5.2. By clicking on the “Cut” button, your selected field will be transferred to the “Work Frame Window”. This enables the Record and Preview buttons.



18. honestech

## 5.6. Step 5 (Repeat Steps 3 and 4)

5.6.1. Select several working frames by repeating frame selection.



## 5.7. Step 6 (Preview)

5.7.1. After all clips have been selected and transferred to the “Work Frame Window”, you can preview them by clicking “Preview clips” button, which features an option to play all clips in continuous way.



## 5.8. Step 7 (Save)

5.8.1. If you are satisfied with the editing work, click “**Recording**” button to create an output file.



## 5.9. Step 8 (Select Split or Join)

5.9.1. A “selection window” (Select Split or Join) will be displayed. The window may differ depending on the recording option used (Split or Join).



- User Setting: Allows the user to manually configure the selected clips.
- Default Setting: Outputs all clips in same format as the input files.  
Available only if all the files are in MPEG format.

5.9.2. When you select “User Setting” option, you will have the following formats to choose from.

- MPEG
- DV-AVI
- AVI
- WMV

## 5.10. Step 9 (Save Information and Output Window)

5.10.1. The “Save” progress will be displayed.

- You may choose to stop the recording process by clicking “Stop Recording” button.

5.10.2. The saved files are displayed as image icons in the “Output Window”.

- Play an output file by double-clicking the clip.
- Right-click on the clip to delete the file, see the property, and etc.



## 5.11. Usage

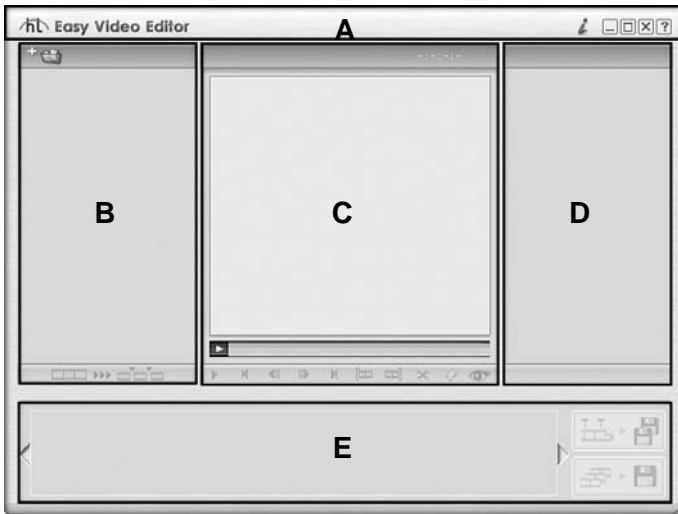
5.11.1. Converting video clip file format.

- Click “Cut Without Setting Frame Range” button (see Step 3). The whole range will be selected.
- Click “Recording” (Split or Join) button.
- Select User Setting, and choose the desired output format.

5.11.2. Converting video clip file format, method for MPEG format only:









- Select the Auto-Split button.
- The “Automatic Split Select” dialog will be displayed with the following options:
  - a) Make the split playtime larger than the playtime.
  - b) Set the number of split files to one.
  - c) Make the size of the split file bigger than the file size.
- Select one, and click [OK].

## 6. Screen layout and explanation

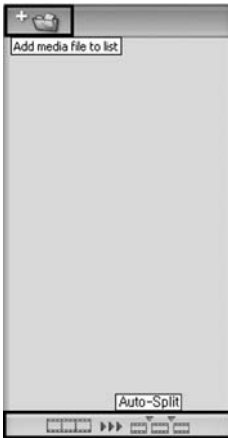


- A. System Menu
- B. File Input Window
- C. Playback and Message Window
- D. File Output Window
- E. Work Frame Window

### 6.1. System Menu

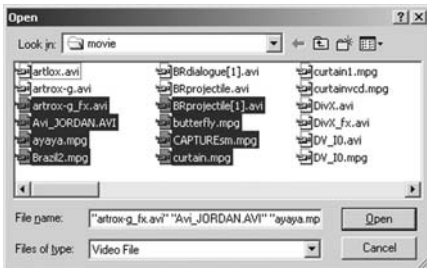
-  **Easy Video Editor**      Logo and Product name
-  Honestech Home Page (web)
-  Minimize
-  Previous screen size
-  Maximize
-  Close program
-  Help
-  Adjust screen size
- Mouse's left button click down and move (Top, both sides, and bottom part of screen)

## 6.2. File Input Window



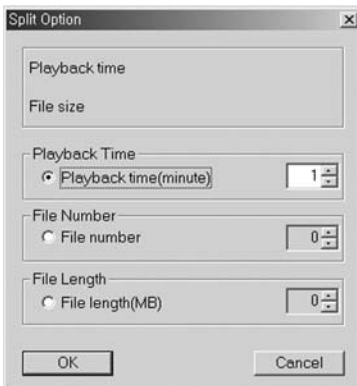
- Icon for input video
- Add button
- Auto-Split button

### 6.2.1. Add File



- Add a single file or multiple files
- Supports MPEG-1, MPEG-2, VCD, SVCD, DVD, AVI, DV-AVI, WMV, and ASF.

### 6.2.2. Auto-Split



- Display a video clip playtime
- Display the size of a video clip file
- Automatically split a file using playtime (minute level split)
- Automatically split a file using the number of files
- Automatically split a file using the file size

### 6.3. Playback and Message Window



- Display progress information
- Playback button
- Frame Range selection
- Preview button

#### 6.3.1. Display Progress Information

##### 1. Display playback







- Displays playback time (click mouse) or frame
  - a. `00:02:38 / 00:15:36` : Displays Time (current time position / total time)
  - b. `79 / 468` : Displays Frame (current frame number / total frame)
- Display progress bar










##### 2. Display saved information



### 6.3.2. Playback Buttons


-  : Playback
-  : Pause
-  : Return to the beginning of the file
-  : Return to the previous frame
-  : Advance to the next frame
-  : Advance to the end of the file

### 6.3.3. Frame Range Selection

-  : Specify the beginning point of a frame (set the beginning field for a frame).  

-  : Specify the ending point of a frame (set the ending field for a frame).  

-  : Clear a specified frame range (clear the frame field setting).  

-  : Add a specified frame range (cut the clip and move it to Work Frame Window).



### 6.3.4. Preview

-  : Play frames in the Working Frame window sequentially.
- Double-click the frame registered in the Working Frame window to perform the same function.

## 6.4. File Output Window

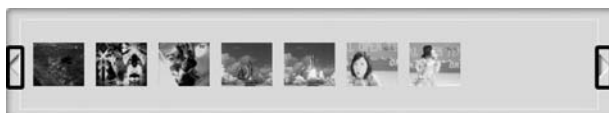
- Lists the clips in icon formats.
- Play an output file by double-clicking on the clip.
- Right-click on the clip to delete file, see the property, and etc.

## 6.5. Work Frame Window



- Display work frames
- Work Frame List window
- Recording button

### 6.5.1. Work Frame List Window



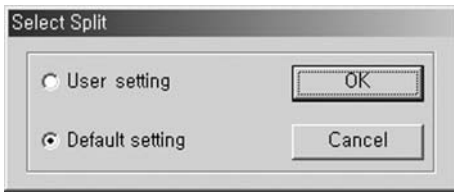
1. Display Work Frame
  - Displays the frames you are currently working on
2. Move Frame Button
  - Move to the left side of the frame window
  - Move to the right side of the frame window

### 6.5.2. Recording Button



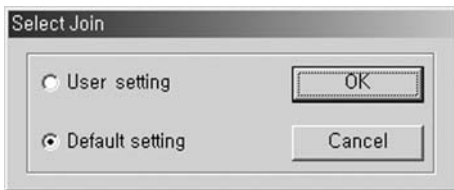
1. Split Save
  - Split the frame in the Working Frame window into separate files
2. Join Save
  - Merge all frames in the Working Frame window into one file

### 6.5.2.1. Split Save



- Select Split Save to save frames from the Working Frame window.
- User setting: Manually configure output file format, audio/video setting, file location, and file name. You have to make a selection whenever each file is saved with a desired configuration.
- Default setting: Split Save the output file information into separate files by applying the input file or the frame information registered in the Current Frame window. This method achieves a fast split-save without the need for constant user interaction.

### 6.5.2.2. Join Save



- Select Join Save to create a single file of frames registered in the Working Frame window.
- User setting: Manually configure output file format, audio/video setting, file location, and file name.
- Default setting: Join save on output file as one file. Use the first entered file or piece of frame information. This method achieves a fast join-save without the need for constant user interaction.

## 6.6. Output Format

1. MPEG format
2. DV-AVI format
3. AVI format
4. WMV format

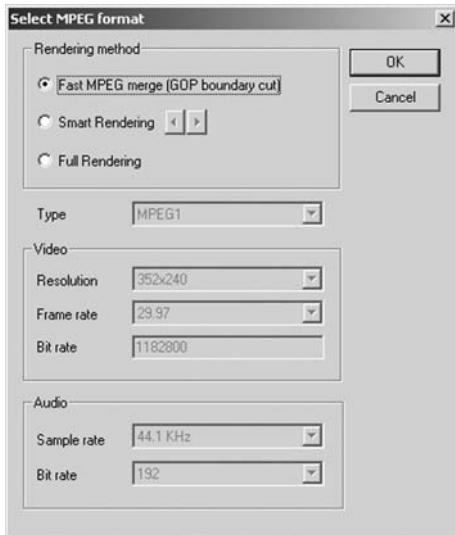
### 6.6.1. MPEG Format

1. Fast Rendering (GOP boundary)
2. Smart Rendering
3. Rendering

### 6.6.1.1. Fast Rendering (GOP boundary)

#### 1. Rendering Method: Fast Rendering

- All video clips being rendered must be in identical MPEG formats. This also makes the insertion and deletion of frames simpler and faster.
- The output video format will match the original MPEG format.
- Customizing of video and audio settings is not possible; function property settings are



made inactive.

#### 2. Type: Displays MPEG format of the file to be rendered

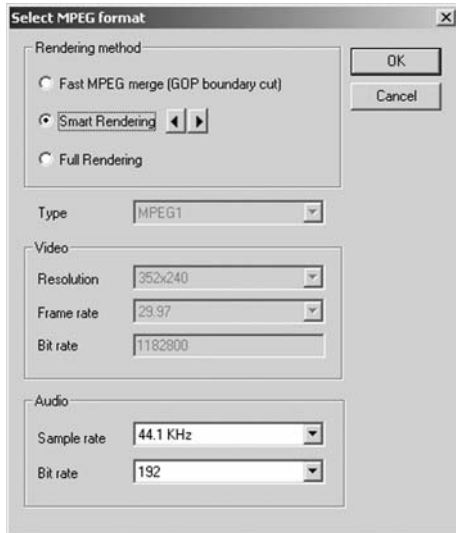
#### 3. Video:

- Resolution: Displays video resolution (screen size)
- Frame Rate: Displays Frames Per Second (fps)
- Bit Rate: Displays Bits Per Second (bps)


#### 4. Audio:

- Sampling Rate: Displays Sampling Frequency (KHz)
- Bit Rate: Displays Bits Per Second (bps)

### 6.6.1.2. Smart Rendering



#### 1. Rendering Method: Smart Rendering

- Encodes only a portion or the entire video as needed.
- Only the edited title, audio, and the segments with special effects of the original streaming video will be encoded, while the remainder of the original video will be saved as is.
- If various effects are applied to the entire movie clip, the whole movie will be re-rendered.
- When movie clips with different video formats are combined, the format of the output file will be set to match the format of the **Base streaming video file**. Movie clips with formats that do not match the **Base streaming video file** will be re-rendered.
- Select the Base streaming video file using the  button.
- The video settings cannot be changed, and only the audio settings can be changed.

#### 2. Type: Display MPEG type

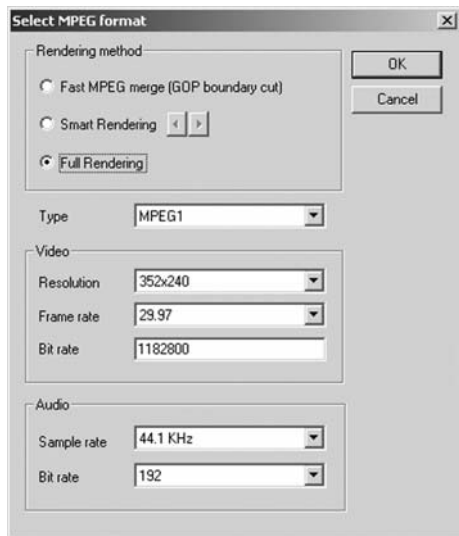
#### 3. Video:

- Resolution: Displays Resolution (screen size)
- Frame Rate: Displays Frames Per Second (fps)
- Bit Rate: Displays Bits Per Second (bps)

#### 4. Audio:

- Sampling Rate: Displays sampling frequency (KHz)
- Bit Rate: Displays Bits Per Second (bps)

### 6.6.1.3. Full Rendering



#### 1. Rendering Method: Full Rendering

- Flexible: Renders movie clips together that are formatted with different video and audio settings
- Customizable: Allows manual selection of the output video and audio settings
- Encoding: Entire video will be encoded.

#### 2. Type: Select MPEG type

- Supports MPEG-1, VCD, MPEG-2, SVCD and DVD. Both NTSC and PAL standards are supported.

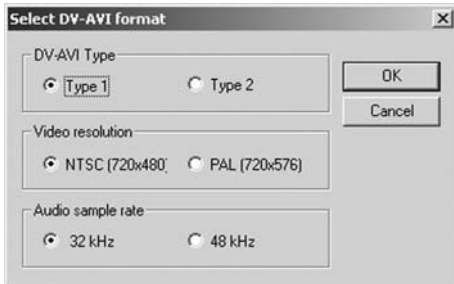
#### 3. Video:

- Resolution: Select resolution (screen size)
- Frame Rate: Select Frames Per Second (fps).
- Bit Rate: Select Bits Per Second (bps)

#### 4. Audio:

- Sampling Rate: Select Sampling Frequency (KHz)
- Bit Rate: Select Bits Per Second (bps)

## 6.6.2 DV-AVI Format



### 1. DV-AVI Type

- Type 1: Video file in Digital Video format
  1. Standard format of video on digital camcorders.
  2. Video and audio are in the same stream.
  3. The combined video and audio requires a splitter that divides the two.
- Type 2: Video file in general AVI format
  1. Video is compressed into digital video format.
  2. Video and audio are in separate streams.
  3. File must be converted into type 1 before transferring to a digital camcorder.

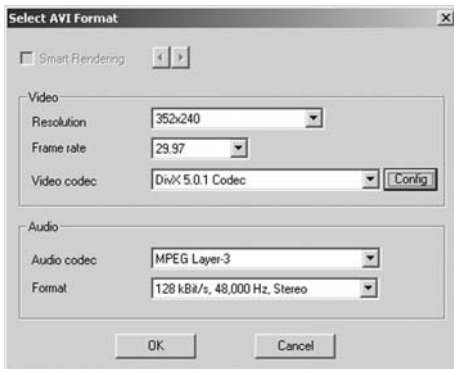
### 2. Video resolution: Select NTSC or PAL


- NTSC: 720 x 480 resolution
- PAL: 720x 576 resolution

### 3. Audio sample rate: Select audio frequency

- 32kHz
- 48kHz

## 6.6.3. AVI Format



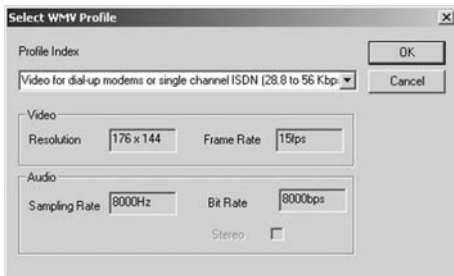
1. Smart Rendering (encodes edited segments of an original streaming video):
  - If the entire video clip was edited, the entire video will be rendered.
  - If more than one streaming video is edited, all videos will be encoded and saved in the same format as the "base streaming file".
  - Videos being encoded are fixed in their format, while the audio track may be adjusted.
2. Video (Supports NTSC and PAL):
  - Resolution: select video screen size (Resolution: 160 x 120 ~ 720 x 576). Resolution settings will be deactivated when Smart Rendering method is selected.
  - Frame Rate (FPS): Set video frame rate (Frames Per Second: FPS) range: 10 FPS ~ 30 FPS. This feature will be deactivated when Smart Rendering is selected.
  - Video CODEC: Displays a drop-down list of CODEC registered on the user's PC.
  - Set Video Properties for the selected video CODEC, using the  button.
3. Audio:
  - Sampling Rate: Set Audio Sampling Frequency (Sampling Frequency: 16000Hz ~ 48000Hz)
  - Audio CODEC: Show the list of audio CODEC registered on the user's PC

**NOTE**

*For more information about CODEC, refer to the manual provided by the CODEC developer.*

6.6.4. WMV (Windows Media) Format

- Select the CODEC from the Profile Index.
- Display the CODEC's settings.



1. Video: Supports NTSC or PAL standards (NTSC is the industry video standard in the USA and Japan, while PAL is the industry video standard adopted in Europe) or computer operating system.
  - Resolution: Displays the video resolution or picture size (width x height)
  - Frame Rate: Displays the video frame rate - Frames Per Second (fps)
2. Audio:
  - Sampling Rate: Displays the Audio Sampling Frequency (Hz)

- Bit Rate: Displays the Audio Bit Rate - Bit Per Second (bps)
- Stereo: Displays the audio presentation type (Stereo, Mono)

**NOTE**

Contact Microsoft(R) for more information about the settings and uses of Windows Media Format (Video/Audio CODEC). All rights to Microsoft(R) CODECs belong to Microsoft.

## 6.7. Popup Menu

### 6.7.1. File Menu

Cut	Ctrl+X
Copy	Ctrl+C
Paste	Ctrl+V
Delete	Del
Properties..	Alt+Enter
Auto-Split	Ctrl+S

- Cut: Cut the selected video clip
- Copy: Copy the selected video clip
- Paste: Paste the selected video clip
- Delete: Delete the selected video clip
- Properties: Displays information about the properties of the file
- Auto-Split: Registered file Auto Split (Only MPEG format)

### 6.7.2. Screen Menu

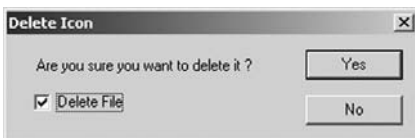
Close
View message
Properties..

- Close: Close the video being played
- View message: Displays information about the saved file
- Properties (file or video clip): Displays information about the video being played

## 6.8. Delete File



- Delete the image icon for a registered file in the Add file window



- The actual file on the hard disk is deleted when Delete File is checked.

## 6.9. File Properties

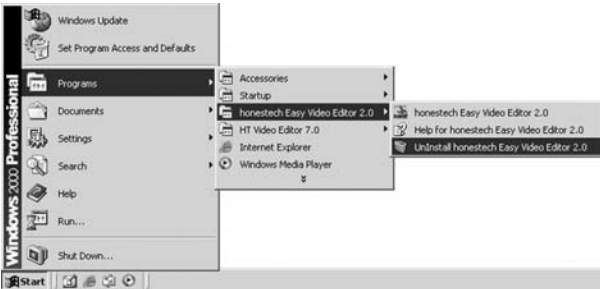
- Displays information about the properties of a selected file



## 7. Uninstall *honestech* Easy Video Editor 2.0

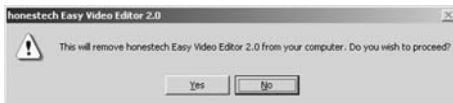
### 7.1. Find its program group

You can uninstall *honestech* Easy Video Editor 2.0 program from its program group by using its own Uninstall feature. From “Start” menu button located on the task bar at the bottom of the screen, choose **Programs** → ***honestech* Easy Video Editor 2.0** → **Uninstall *honestech* Easy Video Editor 2.0**.



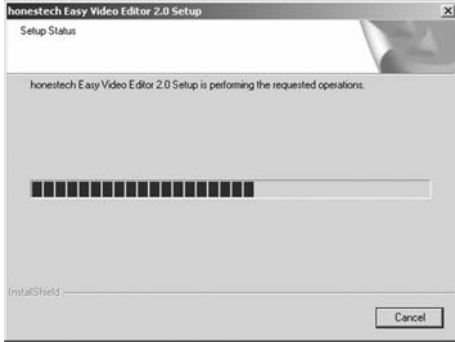
### 7.2. Select to uninstall

Once you select and click UnInstall *honestech* Easy Video Editor 2.0, the following popup screen will appear to confirm the uninstallation. Click **[Yes]** to continue.



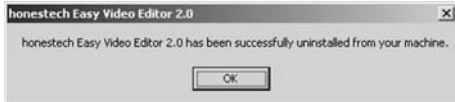
### 7.3 Start uninstall

The following status window will appear, with a progress bar to show the status of the uninstall. Please wait for the uninstall to complete. You may choose to cancel at any point in its progress, by clicking **CANCEL**.



### 7.4 UnInstall Completed

The following popup box will appear, with a message indicating that the program was successfully uninstalled. Click **OK** to close.



## 8. Copyright

Copyright © 2007 Honest Technology, All Rights Reserved.